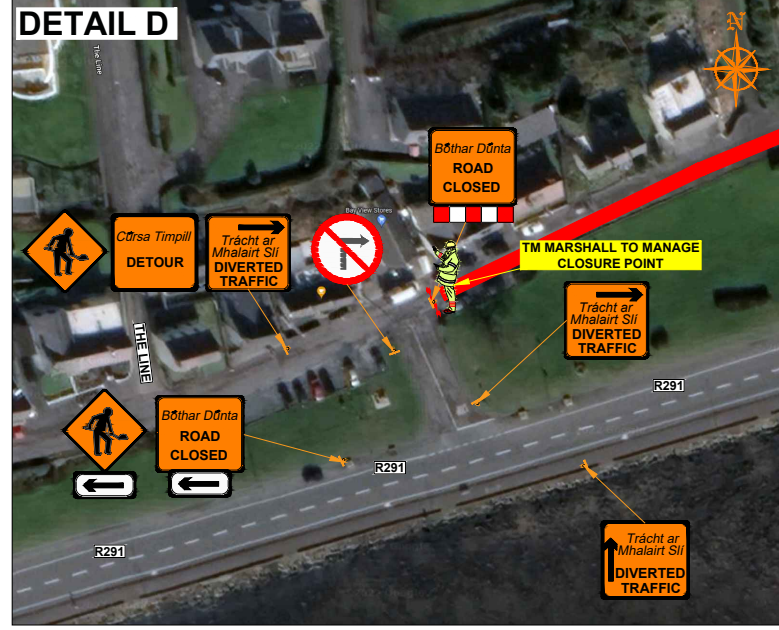
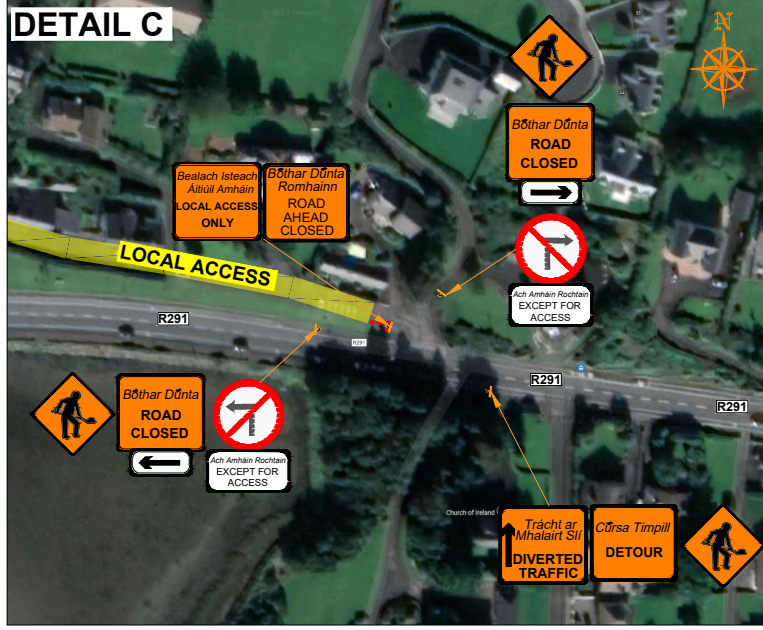
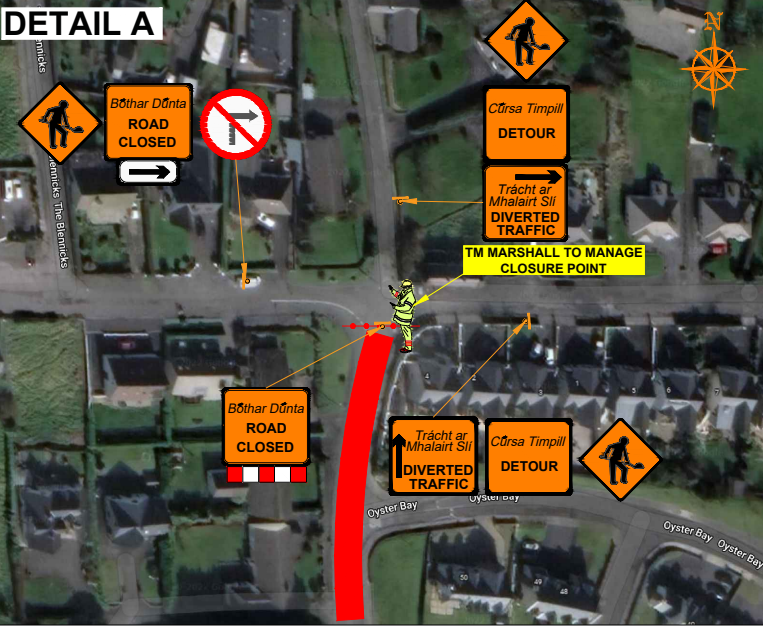
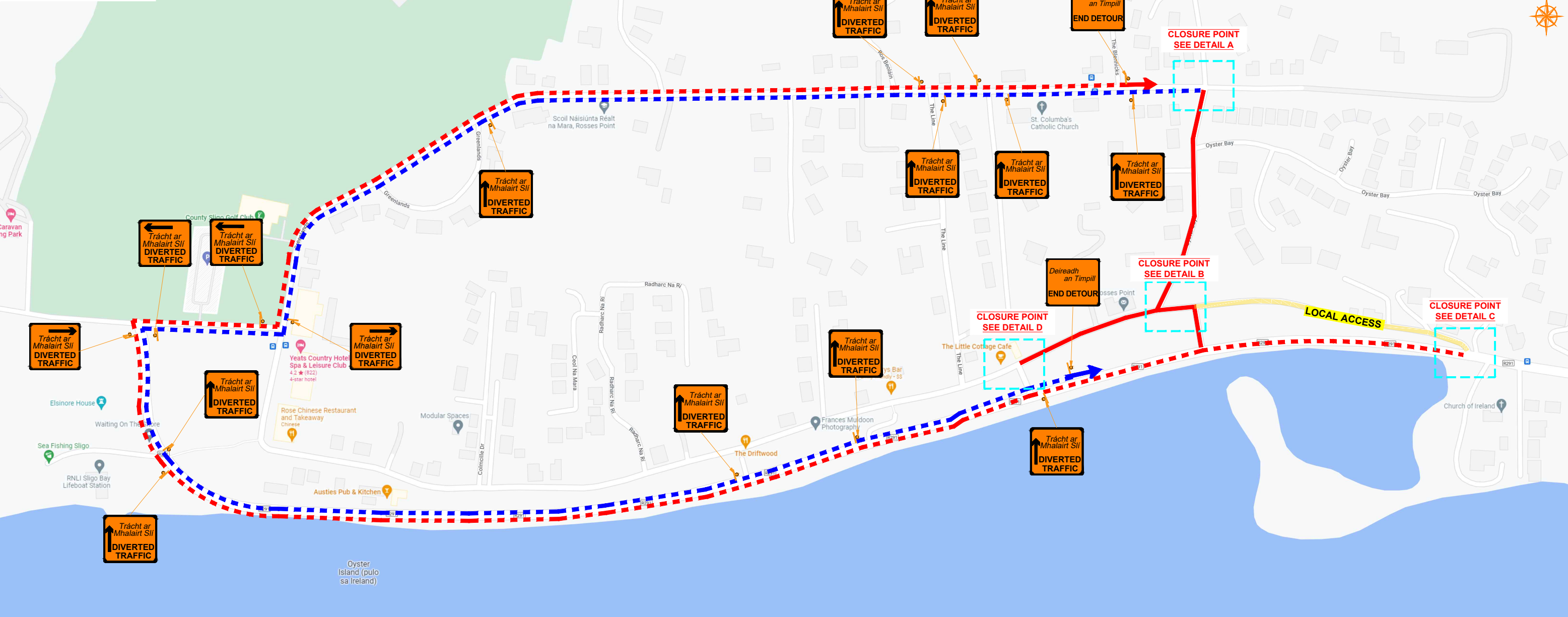


DIVERSION ROUTE



ROAD CONTROL

Copyright Notes:
This drawing is the property of Road Control Services Ltd. The design information contained herein is strictly confidential. This document is not to be used, reproduced, disclosed or circulated in whole or in part without prior written consent.

CLIENT

DESIGN PARAMETERS

| | | | |
|-------------------------|---------|---------------------------|-------|
| Speed Limit | 50 km/h | Sign size (diamond) | 600mm |
| Road Classification | 1(iii) | Sign size (circular) | 600mm |
| Roadworks type | B | Minimum Cone size | 750mm |
| Number of advance signs | 2 | Cone spacing at tapers | 3m |
| Sign visibility | 50m | Cone spacing longitudinal | 3m |
| Distance between signs | 20m | Lateral Safety Zone | 0.5m |
| Taper at lane | N/A | Longitudinal Safety Zone | 5m |
| Taper at hard shoulder | N/A | Minimum lane width | 3.0m |

LEGEND

- Local Access
- Works in Place
- Traffic sign
- Traffic cones
- Diversion Route A
- Diversion Route B

GENERAL NOTES

- All information contained in this drawing (including digital data) should be checked and verified prior to any stage of construction;
- All works are to be carried out in accordance with local authority requirements and are to be included in the site-specific safety & health plan;
- Site inspections and maintenance of the traffic management layout is to be agreed with local authority to ensure the safety and integrity of the design;
- Contractor to carry out a site risk assessment prior to the installation of any traffic management plan to ensure that conditions reflect those considered for design post submission;
- Contractor shall be responsible for the provision of ramp access at any change in road surface level where traffic runs on a temporary surface, and for pedestrian/cycle ramps where footpath/cycle-ways have a level discontinuity as per result of the works.

| Rev | Date | Details | Drn | Chk | App | Drn | BC |
|-----|------|---------|-----|-----|-----|-----|--------------|
| | | | | | | | DS |
| | | | | | | | DH |
| | | | | | | | 20-07-2022 |
| | | | | | | | A1 NTS |
| | | | | | | | A3 NTS |
| | | | | | | | CONSTRUCTION |

ROSCES POINT VILLAGE CATCHMENT A

TRAFFIC MANAGEMENT PLAN PHASE 1 ROAD CLOSURE

Drawing No C22063_01_004 Rev 0